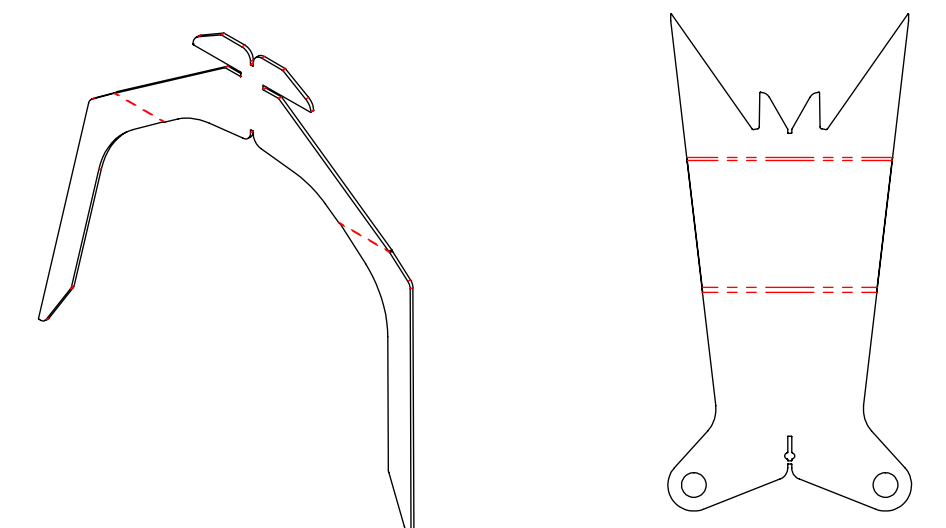
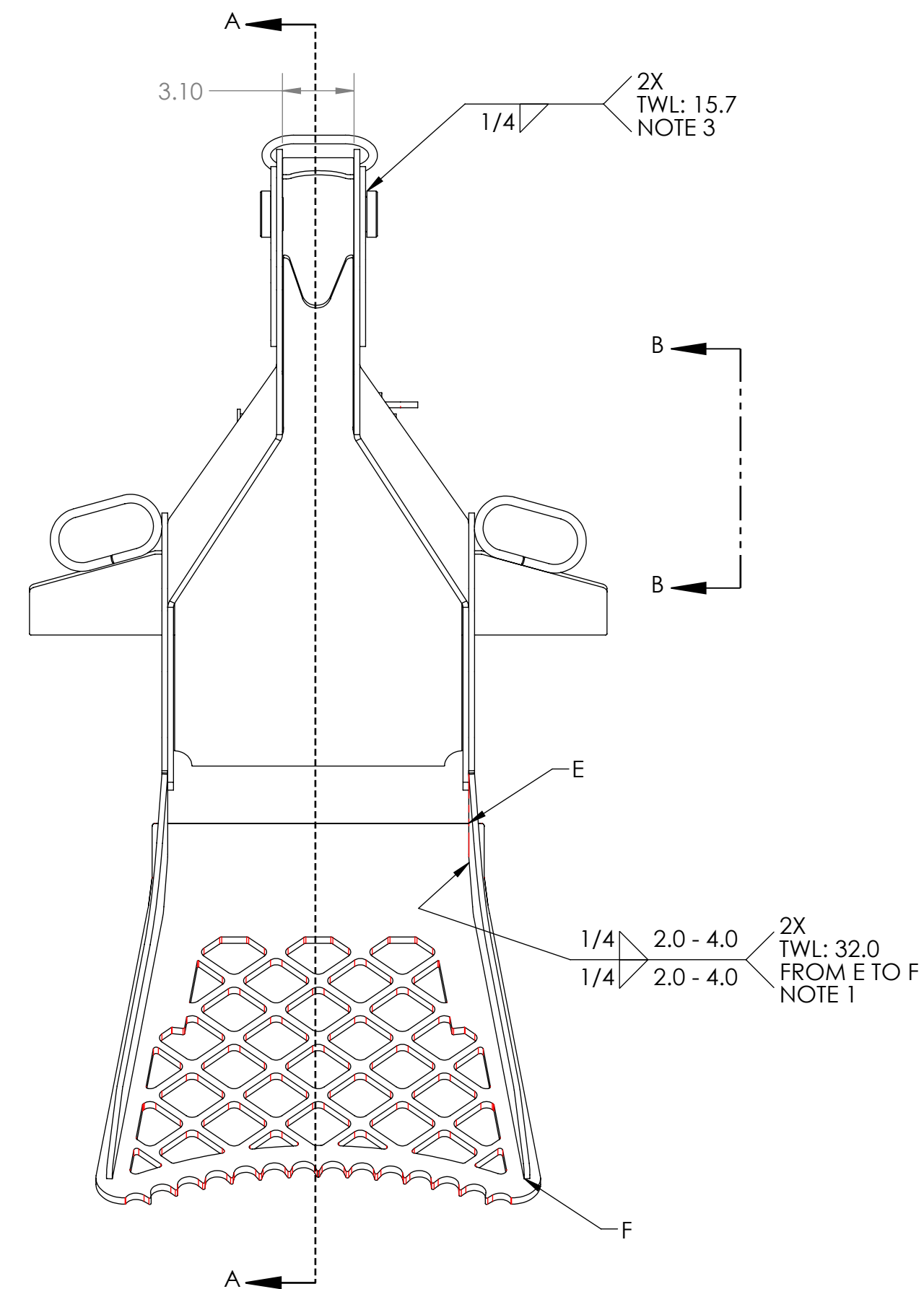
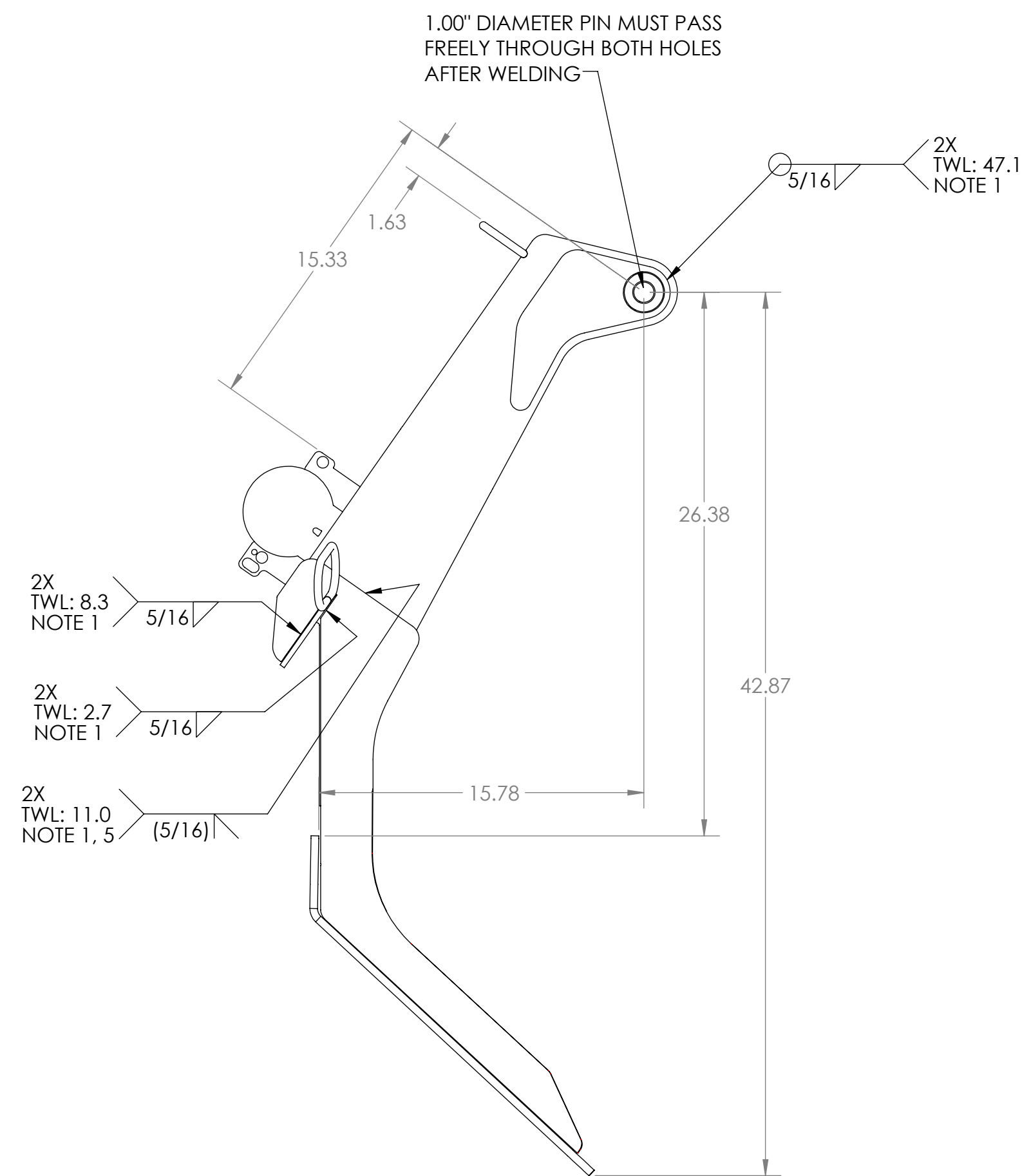
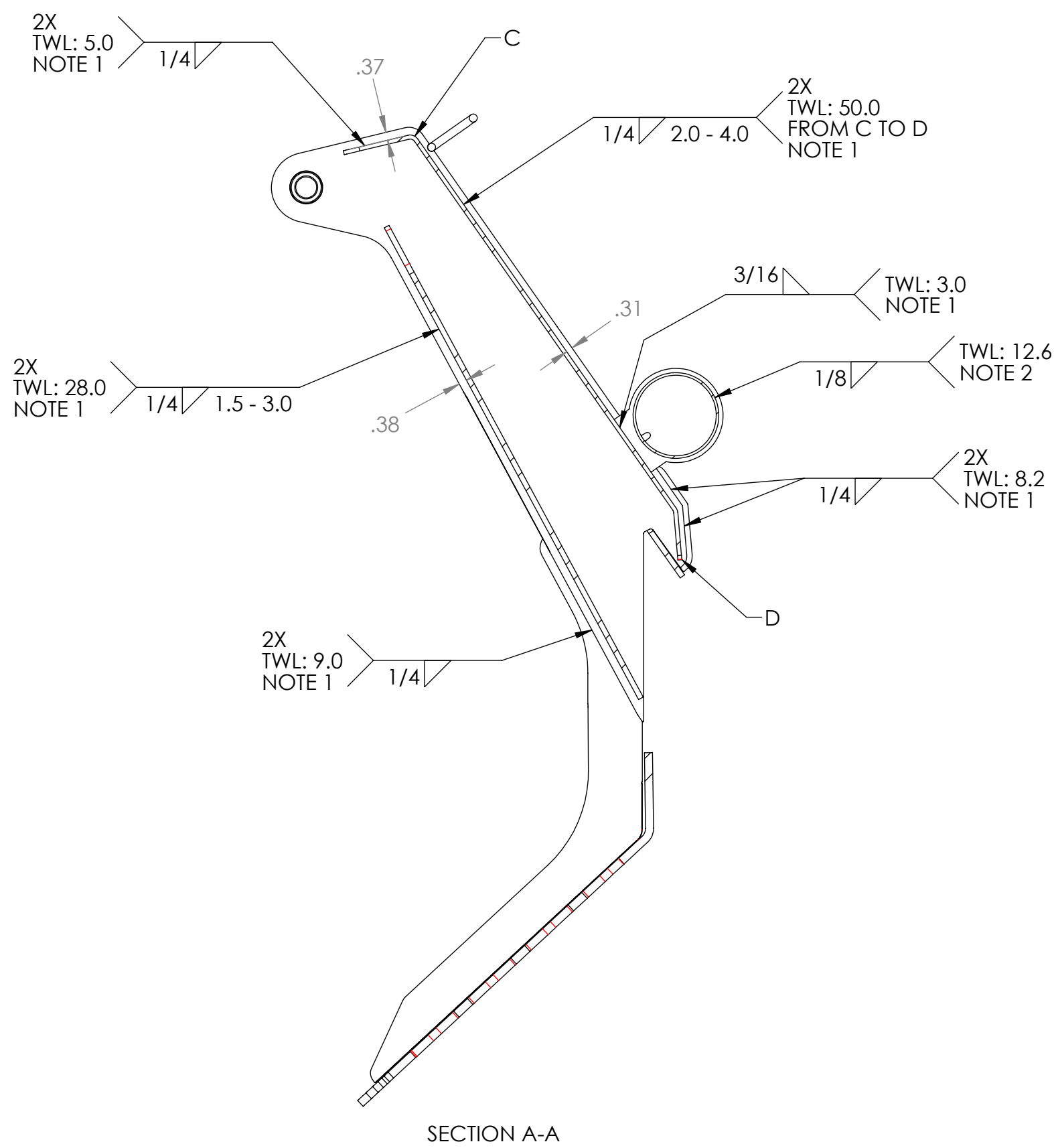
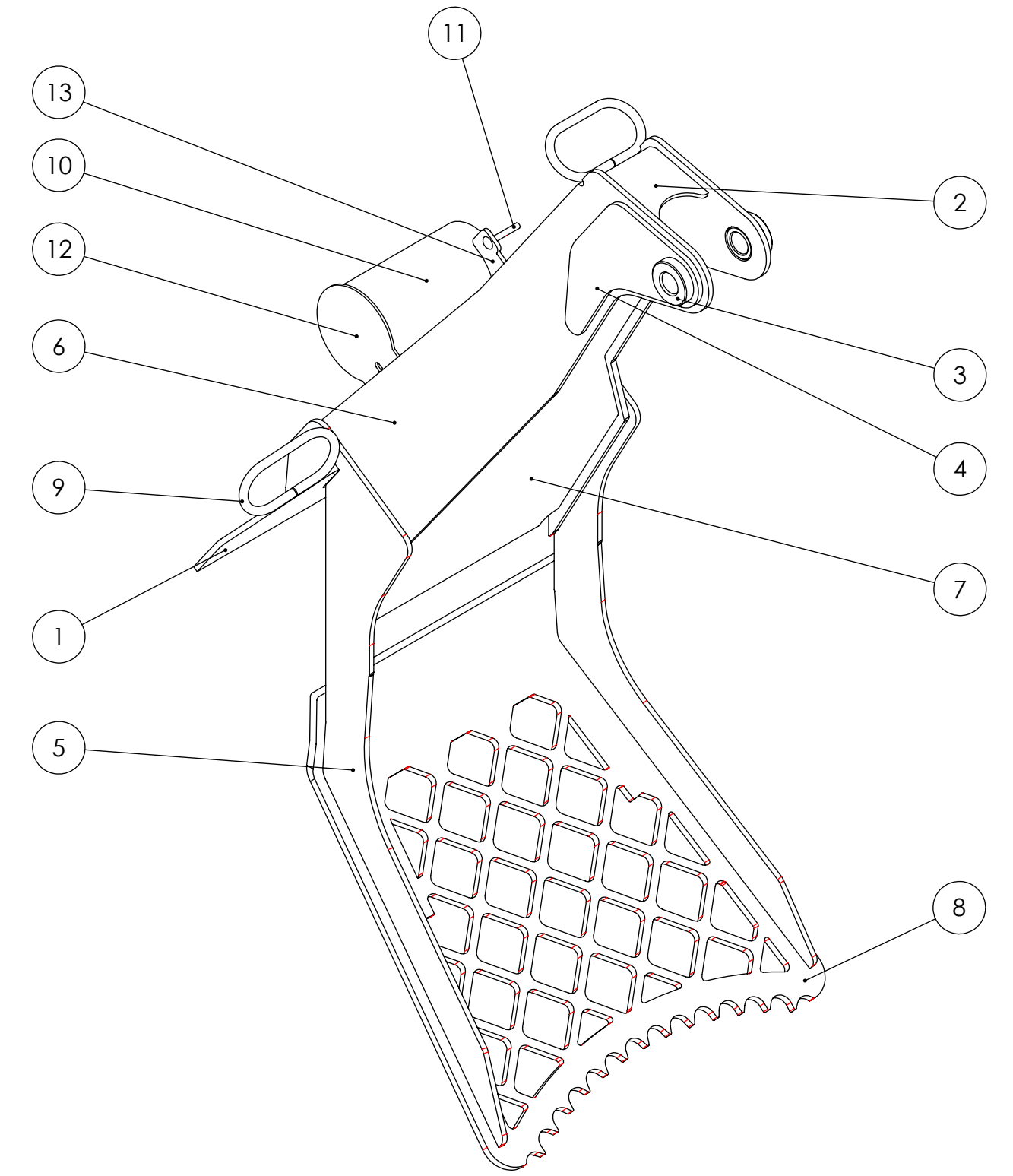
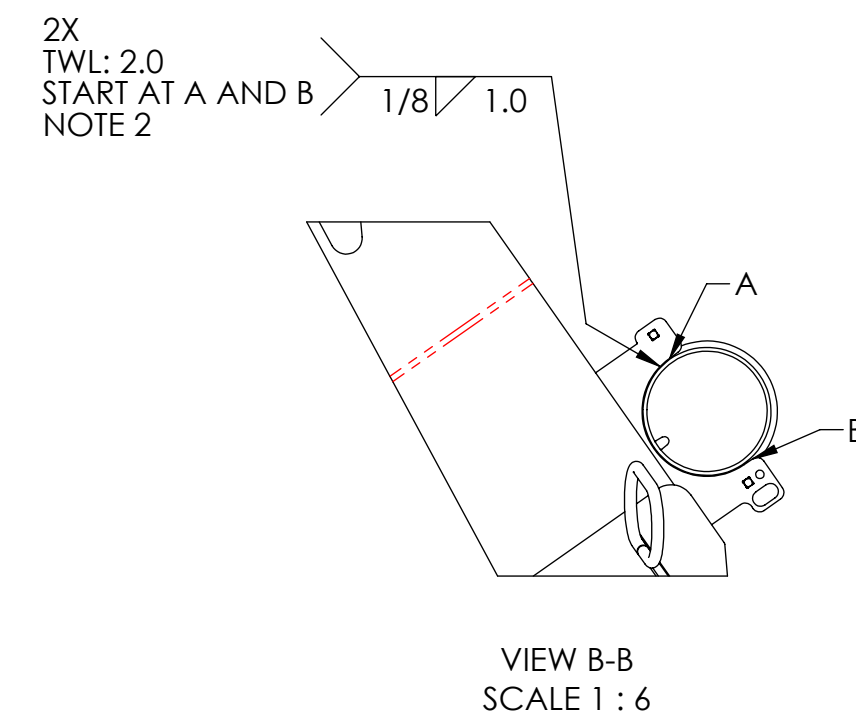
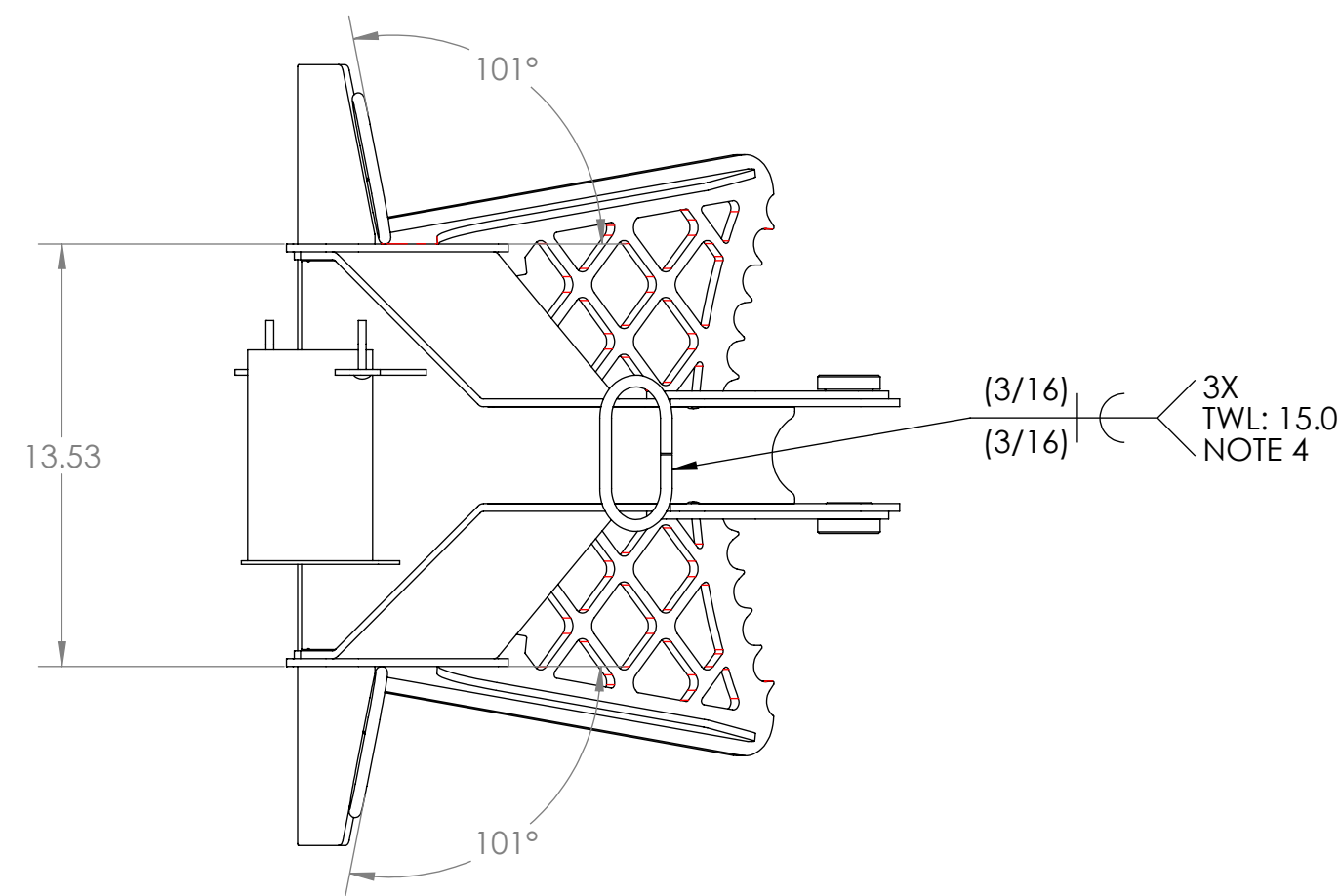
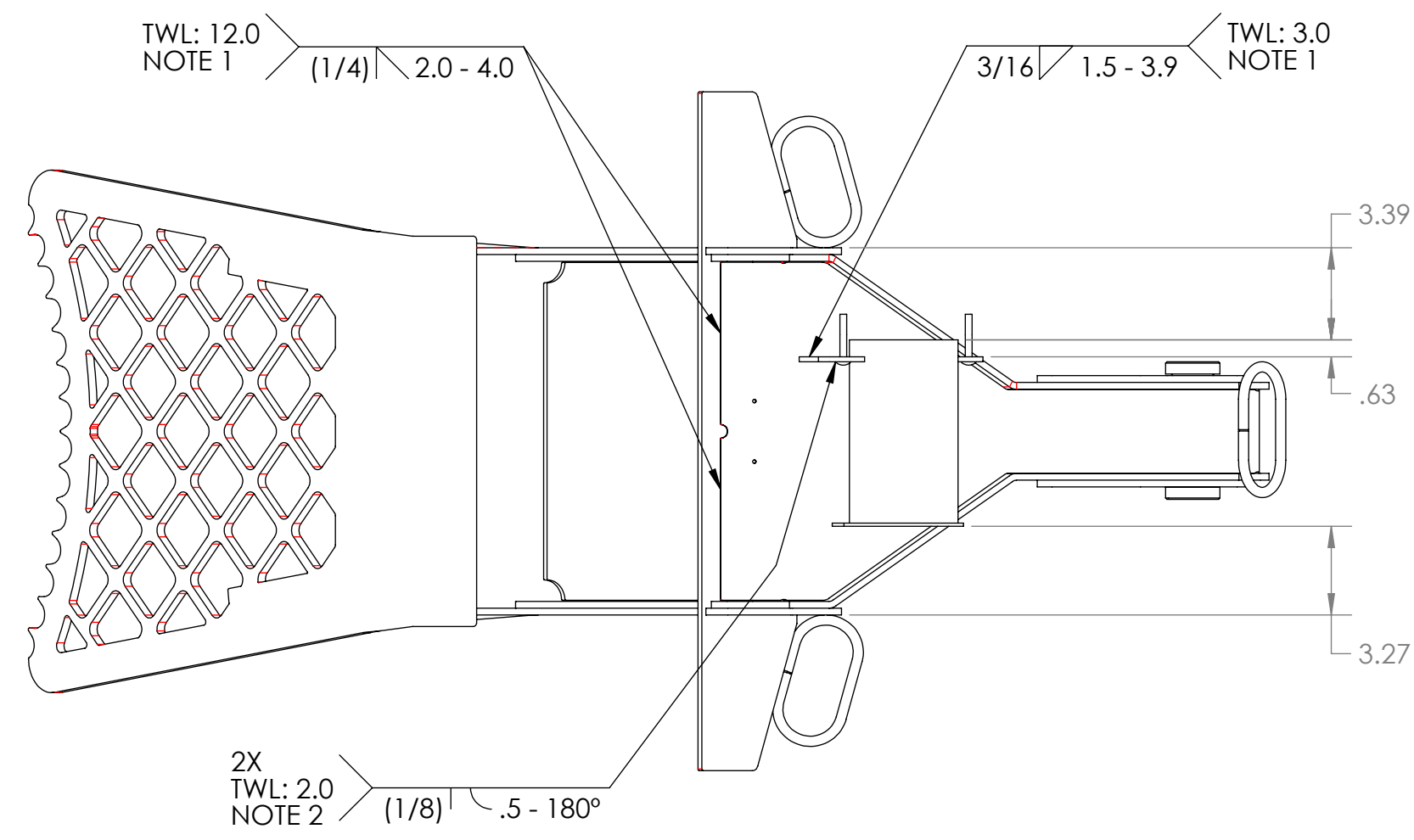


NOTES:

- 1) USE WPS: SKILLS-A572\_A514
- 2) USE WPS: SKILLS-GTAW
- 3) USE WPS: SKILLS-PULSE-1045
- 4) USE WPS: SKILLS-SHORT CIRCUIT
- 5) WRAP ENDS



CUT 5 AND 6 INTO RIGHT-HAND AND LEFT-HAND SIDES USING PRE-CUT NOTCHES.

ITEM NO.	Description	QTY.
1	WELDMENT - SLG ATTACHMENT MOUNT (A572 - Gr.50)	1
2	PLATE - SPINE (A572 - Gr.50)	1
3	BOSS - GRAPPLE METRIC (A576 - 1045)	2
4	PLATE - FISH (A572 - Gr.50)	2
5	PLATE - URLG BACKSTOP SIDES (A572 - Gr.50)	1
6	PLATES - GRAPPLE SIDE (A572 - Gr.50)	1
7	PLATE - FRONT (A572 - Gr.50)	1
8	PLATE - URLG BACKSTOP (A572 - Gr.50)	1
9	WELD RING - OVAL 0.38 DIA X 4.25 X 2.75 (A576 - 1018)	3
10	TUBE - MANUAL CASE (A53 - Gr.B)	1
11	BOLT-CARG--25-20X1.75 (A307 - Gr.A)	2
12	PLATE - MANUAL TUBE MOUNT (A514 - Gr.B)	1
13	PLATE - MANUAL TUBE MOUNT (A514 - Gr.B)	1

Approximate Weight = 117.63 lbs

3RD ANGLE PROJECTION  
 UNLESS OTHERWISE SPECIFIED:  
 DIMENSIONS ARE IN INCHES  
 INTERPRET TO ASME Y14.5 - 2009  
 STANDARD TOLERANCES  
 X.X ±.060  
 X.XX ±.030  
 X.XXX ±.010  
 FRAC.DIM. ±1/32  
 ANGLES ±1°  
 SURFACE FINISH 125

PAGE 1 OF 1  
 SUB. MATL SPECS  
 DESCRIPTION WELDMENT - URLG RECEIVER FOR SKILLS USA USE ONLY  
 ITEM NUMBER SKILLS 2024  
 DESIGN BY SG DATE 2024-04-18

NOTICE: THIS DOCUMENT AND ITS CONTENTS ARE THE PROPERTY OF VERMEER CORPORATION OR ITS U.S. AFFILIATED COMPANIES AND NO USE OR COPIES MAY BE MADE WITHOUT WRITTEN PERMISSION FROM VERMEER CORPORATION.