

Dear Skills USA,

11/10/11

Drury Hotels Company and the Drury Inn and Suites Kansas City-Independence take all emergency situations very seriously. We have emergency procedures that cover all types of emergencies from severe weather to fires. Unfortunately the written procedures are internal and cannot be given out.

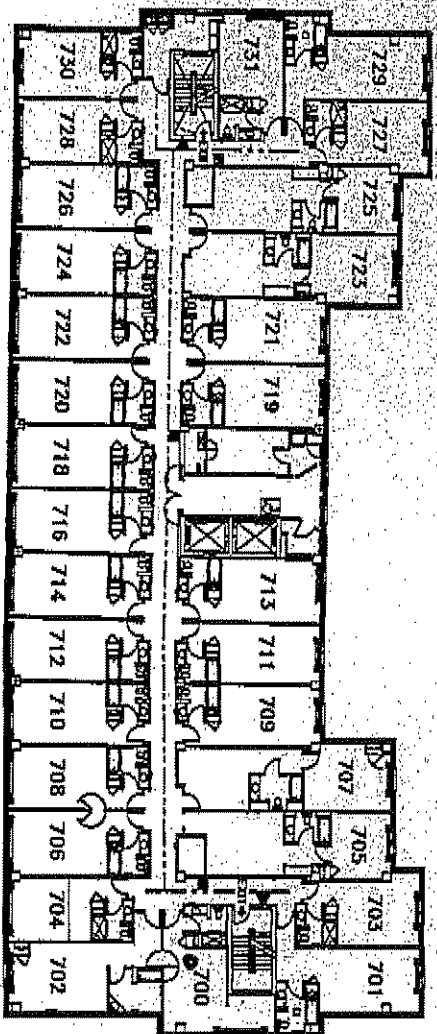
In addition to fire we review other emergency information with the team is how to respond to bomb threats, severe weather, security issues and etc.

We can assure you that we conduct fire drills and other drills using our property specific evacuation plans on a regular basis and we discuss our other emergency procedures on a periodic basis also. I have included a copy of the evacuation map posted on the back of each guest room door which our guest can review upon check in. It is specific to each guest room.

Please let us know if we can answer any additional questions.

Sincerely,
Steven Kohn
General Manager
Drury Inn and Suites Independence

FOR YOUR SAFETY IN AN EMERGENCY



- YOU ARE HERE**
 - AREA OF RESCUE ASSISTANCE**
 - FIRE EVACUATION ROUTE**
 - FIRE EXTINGUISHER**
 - FIRE ALARM PULL STATION**
- If you detect FIRE or SMOKE, call "OPERATOR".
 If you must leave, feel door to see if HOT. If not hot, open door cautiously to see if you may proceed to the stairway (SEE FLOOR PLAN). Take your room key. If you cannot leave, seal door with wet towels. Stay near window until help arrives. DON'T PANIC. DON'T USE ELEVATORS.



Trip to:
Center Point Medical Center
19600 E 39th St S
Independence, MO 64057
(816) 698-7000
1.64 miles
4 minutes

Notes

Drury Inn & Suites Independence
20300 E 42nd Street S
Independence, MO, 64015

- 1. Start out going west on E 42nd St S toward S Crackerneck Rd.**

Go 0.04 Mi
- 2. Take the 1st right onto S Crackerneck Rd.**
If you reach the end of E 42nd St S you've gone a little too far

Go 0.3 Mi
- 3. Take the 3rd right onto E 39th St S.**
If you reach E Bolger Rd you've gone about 0.2 miles too far

Go 1.3 Mi
- 4. 19600 E 39TH ST S is on the left.**
Your destination is just past E 39th Ter S
If you reach Centerpoint Loop Rd you've gone about 0.1 miles too far
- Center Point Medical Center**
Julie Marx DO
19600 E 39th St S, Independence, MO 64057
(816) 698-7000

1.6 mi

Total Travel Estimate: 1.64 miles - about 4 minutes

©2011 MapQuest, Inc. Use of directions and maps is subject to the MapQuest Terms of Use. We make no guarantee of the accuracy of their content, road conditions or route usability. You assume all risk of use. [View Terms of Use](#)

